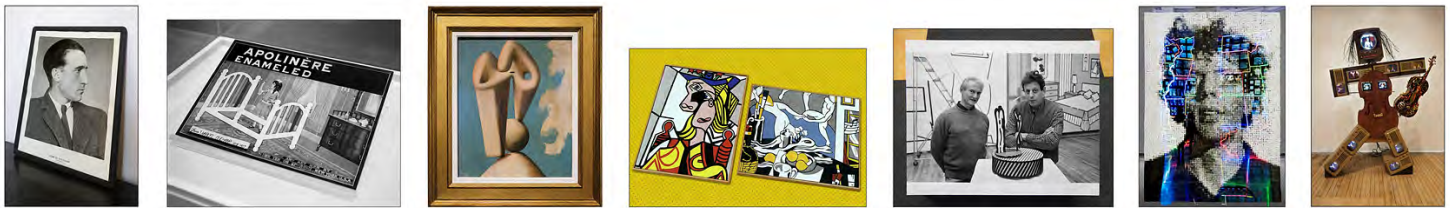


Artist to Artist

Man Ray–Charlotte Moormann

Victor Landweber
www.landweber.com
victor@landweber.com
(510 841-7217)

These photographs are meant to be shown as a complete sequence, in a closely hung, single line of prints in the order shown below:



The following titles are to appear on wall labels below and aligned with each print. The label text is formatted to emphasize the sequence of links among artists. Printed labels will be provided on request.

Man Ray, portrait of Marcel Duchamp

Marcel Duchamp par Man Ray, ca. 1930,
On display at the posthumously
preserved home of David Ireland
500 Capp Street, San Francisco, 2016

Marcel Duchamp, *Apolinère Enameled*, 1916

Tin sign altered by Duchamp
Museum d'Art Contemporani de Barcelona, 2004

Head: Study for a Monument for Apollinaire's Tomb, Pablo Picasso, 1929

Unfinished painting
Met Breuer, New York, 2016

Picasso, *Woman with Flowered Hat*, Matisse, *The Artist's Studio: The Dance*

Two miniature **Roy Lichtenstein** paintings by
Richard Pettibone, 1970s

Roy Lichtenstein and Philip Glass in Lichtenstein's studio, 1991

Photographed with their collaboration, *Modern Love Waltz*, a bronze music box sculpture that plays an original composition by Philip Glass
Getty Research Institute, Barbara Rose papers, 2014

***Phil III*, Chuck Close, 1982**

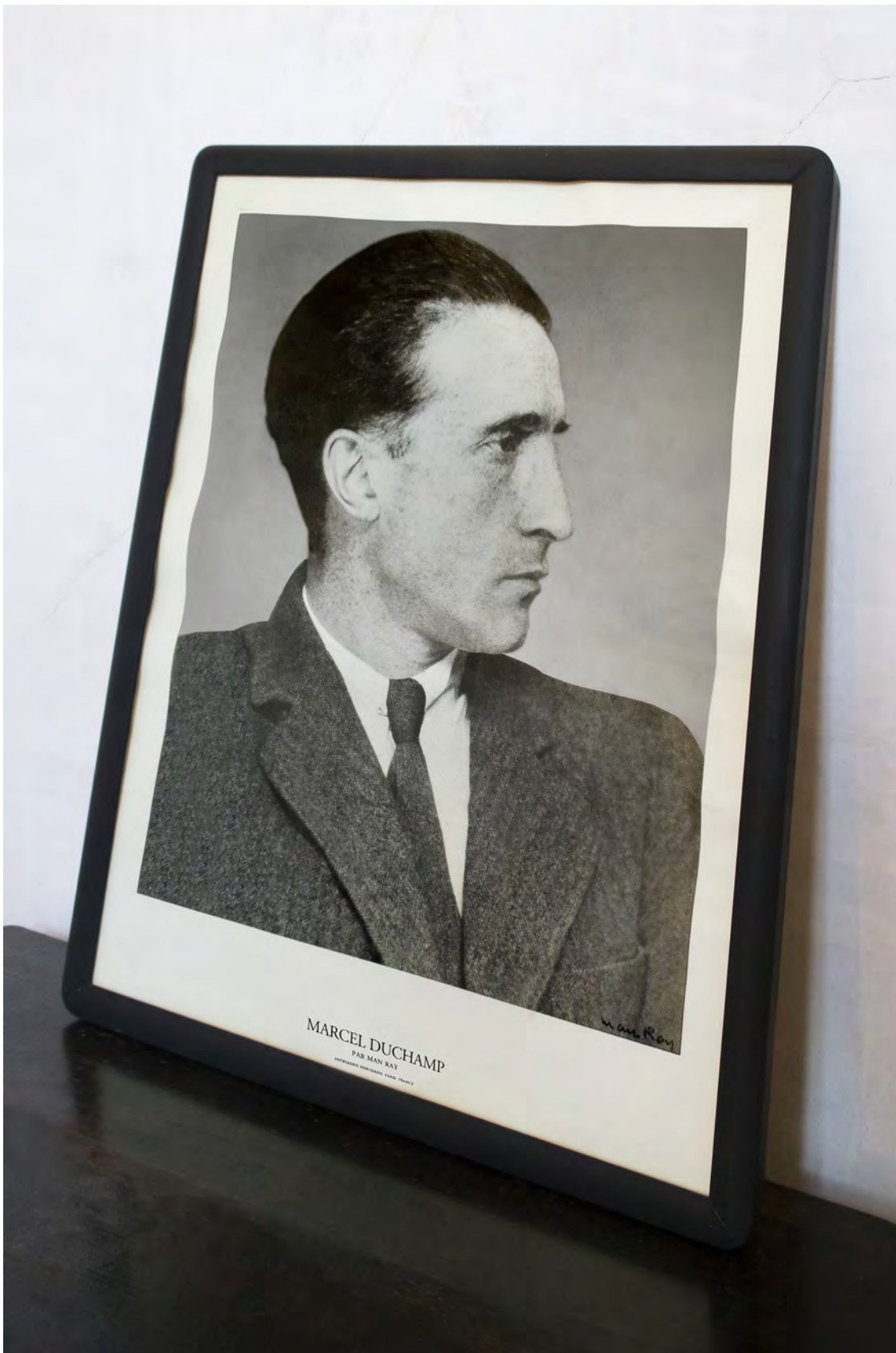
Portrait of **Philip Glass** with reflection of **Nam June Paik's *Electronic Superhighway: Continental U.S., Alaska, Hawaii***, 1995
Smithsonian American Art Museum, WDC, 2008

Nam June Paik, *Charlotte Moormann II*, 1995

Paik's portrait sculpture of **Charlotte Moormann**, his musical collaborator
Grey Art Gallery, NYU, New York, 2016

Seven digital-pigment prints on 12"×16" Legion Moab Entrada





Man Ray, portrait of Marcel Duchamp

Marcel Duchamp par Man Ray, ca. 1930,

On display at the posthumously
preserved home of David Ireland

500 Capp Street, San Francisco, 2016



Marcel Duchamp, *Apolinère Enameled*, 1916

Tin sign altered by Duchamp

Museum d'Art Contemporani de Barcelona, 2004



*Head: Study for a Monument for **Apollinaire's Tomb**, Pablo Picasso, 1929*

Unfinished painting

Met Breuer, New York, 2016



Pablo Picasso, *Woman with Flowered Hat*,
Henri Matisse, *The Artist's Studio: The Dance*

Two miniature **Roy Lichtenstein** paintings by Richard Pettibone, 1970s

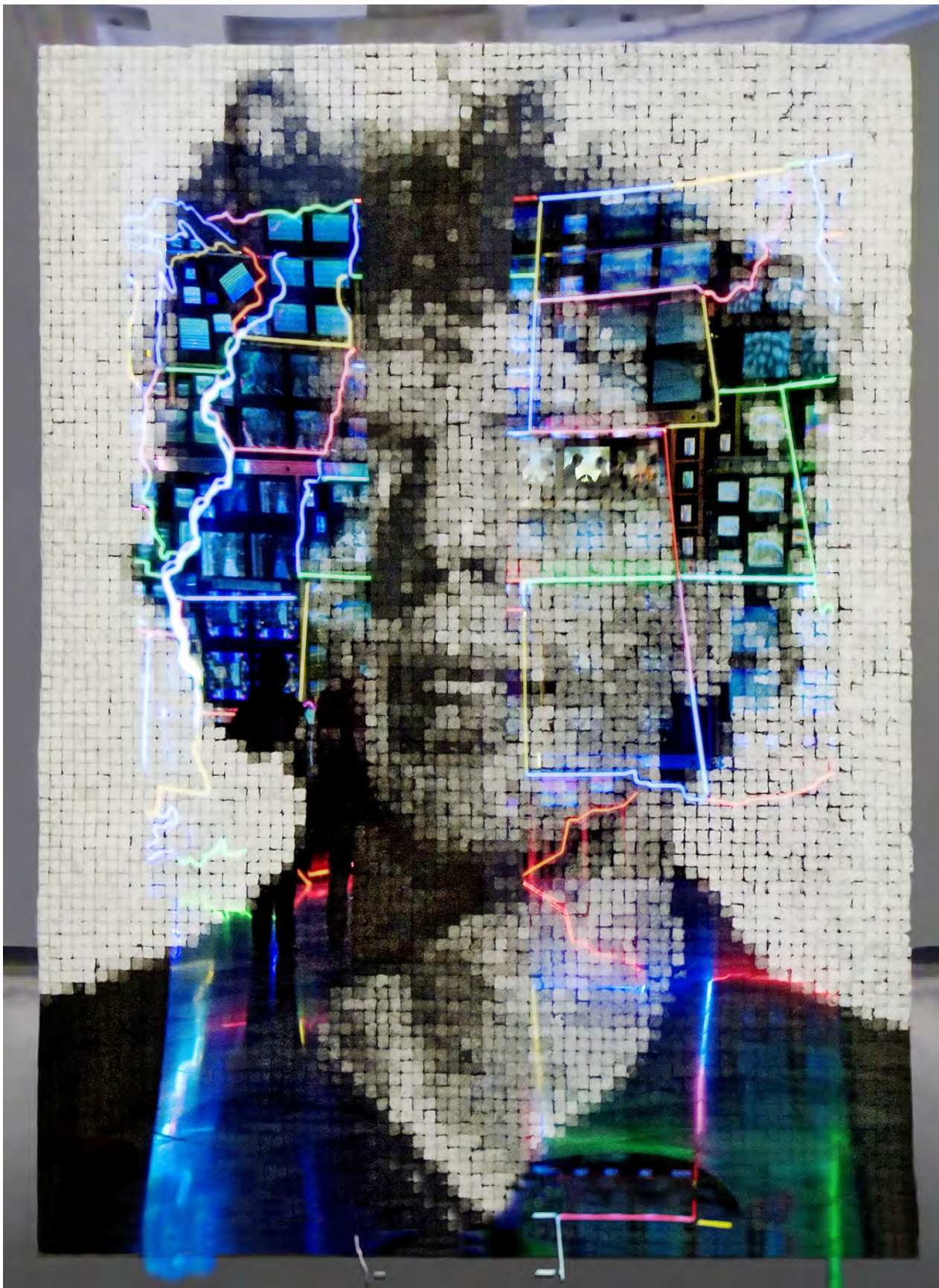
Constructed from Pettibone reproductions, 2008



Roy Lichtenstein and Philip Glass in Lichtenstein's studio, 1991

Photographed with their collaboration, *Modern Love Waltz*, a bronze music box sculpture that plays an original composition by Philip Glass

Getty Research Institute, Barbara Rose papers, 2014



Phil III, Chuck Close, 1982

Portrait of **Philip Glass** with reflection of **Nam June Paik's**
Electronic Superhighway: Continental U.S., Alaska, Hawaii, 1995

Smithsonian American Art Museum, WDC, 2008



Nam June Paik, *Charlotte Moorman II*, 1995

Paik's portrait sculpture of **Charlotte Moorman**, his musical collaborator

Grey Art Gallery, NYU, New York, 2016

Printable Wall Labels

(Man Ray–Charlotte Moorman)

Picasso, *Woman with Flowered Hat*,
Matisse, *The Artist's Studio: The Dance*
Two miniature **Roy Lichtenstein** paintings
by Richard Pettibone, 1970s

Constructed from Pettibone reproductions, 2008

Man Ray, portrait of **Marcel Duchamp**
Marcel Duchamp par Man Ray, ca. 1930,
On display at the posthumously
preserved home of David Ireland

Roy Lichtenstein and **Philip Glass** in
Lichtenstein's studio, 1991
Photographed with their collaboration,
Modern Love Waltz, a bronze music box
sculpture that plays an original compo-
sition by Philip Glass

500 Capp Street, San Francisco, 2016

Getty Research Institute, Barbara Rose papers, 2014

Marcel Duchamp, *Apolinère Enameled*,
1916
Tin sign altered by Duchamp

Phil III, Chuck Close, 1982
Portrait of **Philip Glass** with reflection
of **Nam June Paik's** *Electronic Super-
highway: Continental U.S., Alaska,
Hawaii*, 1995

Museum d'Art Contemporani de Barcelona, 2004

Smithsonian American Art Museum, WDC, 2008

*Head: Study for a Monument for
Apollinaire's Tomb*, **Pablo Picasso**,
1929
Unfinished painting

Nam June Paik, *Charlotte Moormann II*,
1995
Paik's portrait sculpture of **Charlotte
Moormann**, his musical collaborator

Met Breuer, New York, 2016

Grey Art Gallery, NYU, New York, 2016

Copyright

I do not claim copyright of artworks depicted in *Artist to Artist*. I claim authorship only for new material that appears in the photographs including fabrication and alteration of images, background selection and placement of artworks, and the conceptual sequences about connections among artists. These photographic sequences are intended for educational use and as artworks in their own right. They are not offered for sale.